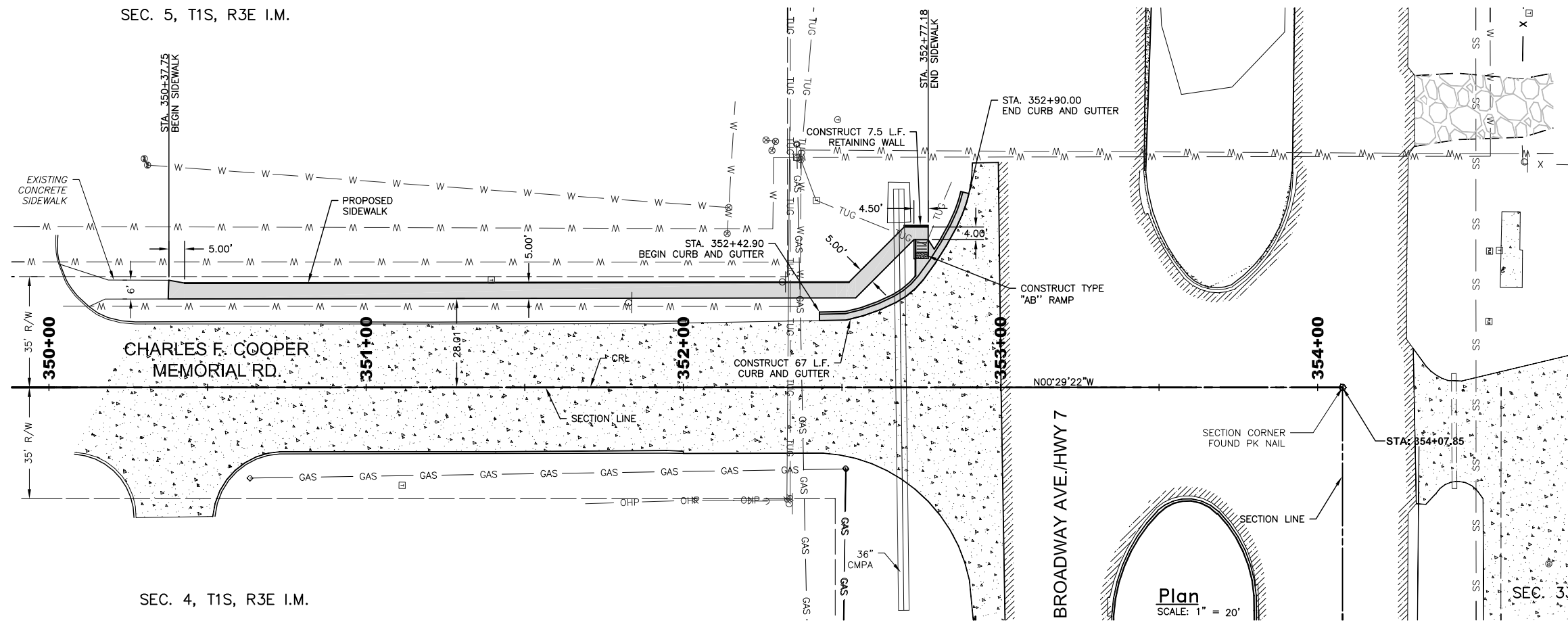


SEC. 5, T1S, R3E I.M.

| REVISIONS | | |
|-----------|-------------|------|
| REV. NO. | DESCRIPTION | DATE |
| | | |

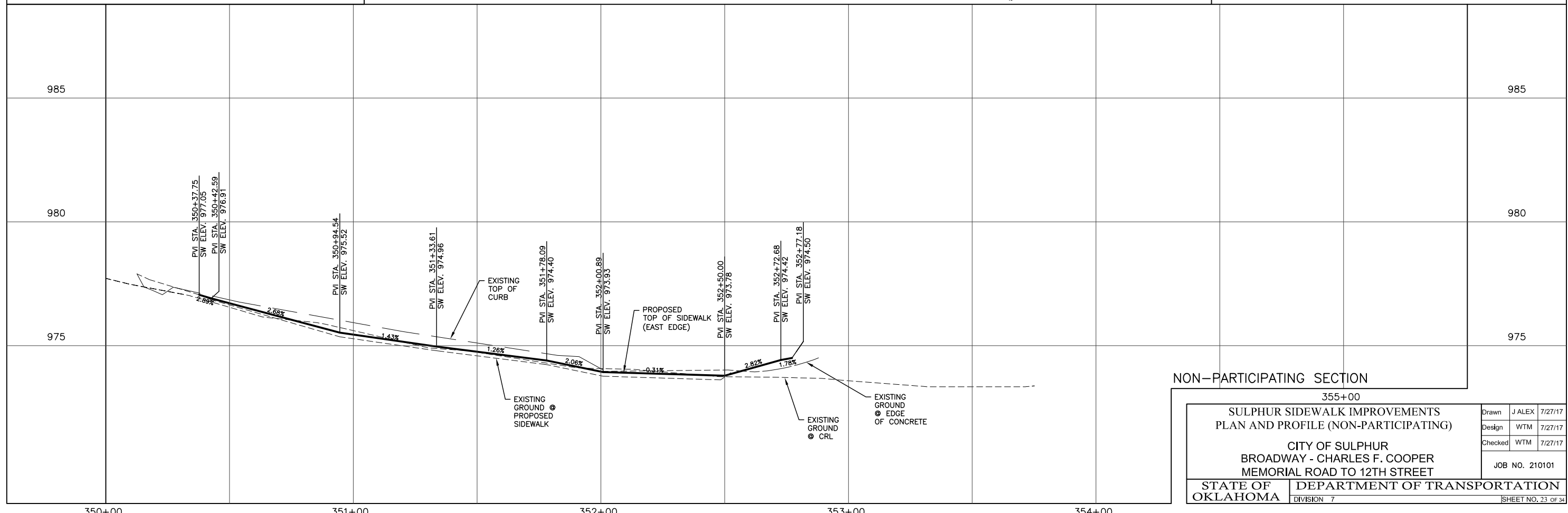
SEC. 32, T1N, R3E I.M.



SEC. 4, T1S, R3E I.M.

SEC. 33, T1N, R3E I.M.

| LEGEND | | | | | | | | | | | | | | | | | | | | | | | | | | | | | |
|--------|----------------|--|-------------------|--|-----------------|--|-----------------|--|--------------|--|--------------|--|-------------------|--|--------------------|--|----------------|--|----------|--|--------------|--|-------------------|--|-------------------|--|------------|--|-------------|
| | EXIST. ASPHALT | | EXIST. GRASS | | EXIST. GRAVEL | | EXIST. CONCRETE | | CLEAN OUT | | POWER POLE | | GASOLINE FILL CAP | | TELEPHONE PEDESTAL | | DRAINAGE INLET | | SIGN | | GAS METER | | VENT PIPE | | FLAG POLE | | LIGHT POLE | | WATER VALVE |
| | BENCH MARK | | SANITARY SEWER MH | | GAS LINE MARKER | | TRAFFIC VAULT | | FIRE HYDRANT | | SIGNAL VAULT | | GUY ANCHOR | | WATER METER | | STORM SEWER MH | | MAIL BOX | | YARD HYDRANT | | PROPOSED SIDEWALK | | PROPOSED CONCRETE | | | | |



NON-PARTICIPATING SECTION

355+00

SULPHUR SIDEWALK IMPROVEMENTS
PLAN AND PROFILE (NON-PARTICIPATING)

CITY OF SULPHUR
BROADWAY - CHARLES F. COOPER
MEMORIAL ROAD TO 12TH STREET

| | | |
|----------------|--------|---------|
| Drawn | J ALEX | 7/27/17 |
| Design | WTM | 7/27/17 |
| Checked | WTM | 7/27/17 |
| JOB NO. 210101 | | |

STATE OF OKLAHOMA DEPARTMENT OF TRANSPORTATION
DIVISION 7 SHEET NO. 23 OF 34

J:\Sulphur\210101\grad\2017\Phase 1\210101 GRADING_08.dwg, 8/10/2017 10:17:43 AM, JobA, 1:204657